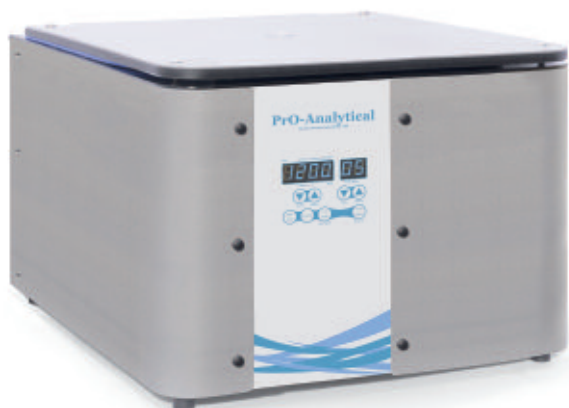


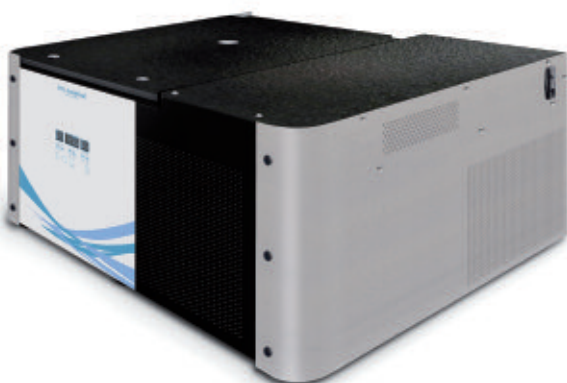
CR7000 Ambient Centrifuge 3 Litre



Display indicative only.

- Speed**500 - 15000 Rpm
(10 Rpm steps)
- Rcf max**22,000 G
- Timer**.....0-9999 Mins & hold
(30 sec steps)
- Dimensions** ...HWD 375 x 600 x 630mm
- Weight**.....63.5 Kg (without rotor)
- Power**.....750 watts
- Memory**.....10 programs
- Accel rates** ...10
- Decel rates** ...10

CR7000R Refrigerated Centrifuge 3 Litre



Display indicative only.

- Speed**500 - 15000 Rpm
(10 Rpm steps)
- Rcf max**22,000 G
- Timer**.....0-99 Mins & hold
(30 sec steps)
- Dimensions** ...HWD 410 x 998 x 630mm
- Weight**.....120 Kg (without rotor)
- Power**.....1200 watts
- Memory**.....10 programs
- Accel rates** ...10
- Decel rates** ...10
- Temp**-9 to +40°C PID
controlled to +/- 1°C

Microtube Rotors 15,000 Rpm

NEW

High dome sealed Polycarbonate lid included

Part number



BRK5424 BRK5436 BRK5448 BRK5494

Rotor type	24 x 2ml	36 x 0.5ml	48 x 0.2ml	4 x Pcr strips
Tube size max	11 x 50mm	8 x 30mm	6 x 40mm	8 per strip
Minimum speed	500 Rpm	500 Rpm	500 Rpm	500 Rpm
Maximum speed	15,000 Rpm	15,000 Rpm	15,000 Rpm	15,000 Rpm
Maximum Rcf (G)	22000	22000	22000	22000
Radius max cms	8.75cms	8.75cms	8.75cms	8.75cms
Sample tube angle (o)	45	45	45	45
Acceleration time (secs)	20	20	20	20
Deceleration time (secs)	20	20	20	20
Autoclaveable (frequency)	121°C (20)	121°C (20)	121°C (20)	121°C (20)

Refrigerated Centrifuges only

Minimum Temperature **4°C** 4°C 4°C 4°C

At maximum speed (relative to room temperature at 23°C)

Reducers



Rotor	BRK5424
Part number - Pack 24	RS04 (0.2 - 0.4ml)
Tube size max	6 x 30mm
Part number - Pack 24	RS05 (0.5ml)
Tube size max	8 x 30mm

Swing out rotors

Adaptors available see page 19



Part number	BRK5553
Buckets	B3000 set 4 (Required)
Rotor type	4 x 750ml
Tube size max	98 x 170mm
Minimum speed	500 Rpm
Maximum speed	4,000 Rpm
Maximum Rcf (G)	3600
Radius max cms	20.15
Sample tube angle (o)	0
Acceleration time (secs)	45
Deceleration time (secs)	45
Autoclaveable (frequency)	121°C (20)

Sealed lids available Part Nos B5319 set 4

Refrigerated Centrifuges only

Minimum Temperature **4°C**

At maximum speed (relative to room temperature at 23°C)