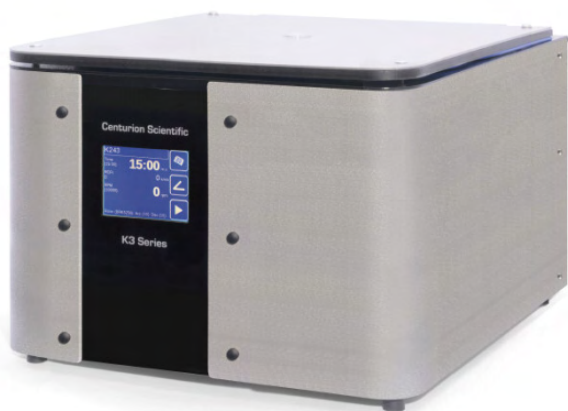


## K243 Ambient Centrifuge



**Speed** .....500-15000 Rpm  
(1 Rpm steps)

**Rcf max** .....22,000 G

**Timer**.....0-9999 Mins & hold  
(1 sec steps)

**Dimensions** ...HWD 375 x 600 x 630mm

**Weight**.....63.5 Kg (without rotor)

**Power**.....750 watts

**Memory**.....108 programs

**Accel rates** ...10

**Decel rates** ...10

## K243R Refrigerated Centrifuge



**Speed** .....500-15000 Rpm  
(1 Rpm steps)

**Rcf max** .....22,000 G

**Timer**.....0-9999 Mins & hold  
(1 sec steps)

**Dimensions** ...HWD 410 x 998 x 630mm

**Weight**.....120 Kg (without rotor)

**Power**.....1200 watts

**Memory**.....108 programs

**Accel rates** ...10

**Decel rates** ...10

**Temp** .....-9 to +40°C PID  
controlled to +/- 1°C

# Index

## Page 6 Microtube Rotors 15,000 Rpm

Part number	<b>BRK5424</b>	<b>BRK5436</b>	<b>BRK5448</b>	<b>BRK5494</b>
Rotor type	24 x 2ml	36 x 0.5ml	48 x 0.2ml	4 x Pcr strips
Tube size max	11 x 50mm	8 x 30mm	6 x 40mm	8 per strip

## Page 6 Haematocrit Rotor 12,000 Rpm

Part number	<b>BRK5401</b>
Rotor type	24 x capillary & 12 x 2ml
Tube size max	75 x 2mm Capillary & 11 x 40mm

## Page 7 High Speed Rotors 10,000 Rpm

Part number	<b>BRK5224</b>	<b>BRK5208</b>	<b>BRK5210</b>	<b>BRK5256</b>
Rotor type	24 x 15ml	8 x 50ml	6 x 100ml	6 x 250ml
Tube size max	17 x 120mm	30 x 120mm	45 x 125mm	58 x 120mm

## Page 8 Medium Speed Rotors 6000 Rpm

Part number	<b>BRK5324</b>	<b>BRK5308</b>	<b>BRK5100</b>
Rotor type	24 x 15ml	8 x 50ml	6 x 100ml
Tube size max	17 x 120mm	30 x 120mm	45 x 125mm

## Page 9 Cytology Rotor 2000 Rpm

Part number	<b>4430</b>
Rotor type	8 x 0.2ml to 6.0ml
Holders	Single or Double holder

## Page 10 Swing Out Rotors 4000 Rpm

Part number	<b>BRK5553</b>
Buckets	B3000 (Required)
Rotor type	4 x 750ml
Tube size max	98 x 170mm

# Microtube Rotors 15,000 Rpm

## NEW

High dome sealed Polycarbonate lid included



Part number	<b>BRK5424</b>	<b>BRK5436</b>	<b>BRK5448</b>	<b>BRK5494</b>
Rotor type	24 x 2ml	36 x 0.5ml	48 x 0.2ml	4 x Pcr strips
Tube size max	11 x 50mm	8 x 30mm	6 x 40mm	8 per strip
Minimum speed	500 Rpm	500 Rpm	500 Rpm	500 Rpm
Maximum speed	15,000 Rpm	15,000 Rpm	15,000 Rpm	15,000 Rpm
Maximum Rcf (G)	22000	22000	22000	22000
Radius max cms	8.75cms	8.75cms	8.75cms	8.75cms
Sample tube angle (°)	45	45	45	45
Acceleration time (secs)	20	20	20	20
Deceleration time (secs)	20	20	20	20
Autoclaveable (frequency)	121°C (20)	121°C (20)	121°C (20)	121°C (20)

## Refrigerated Centrifuges only

Minimum Temperature	4°C	4°C	4°C	4°C
---------------------	-----	-----	-----	-----

At maximum speed (relative to room temperature at 23°C )

# Reducers



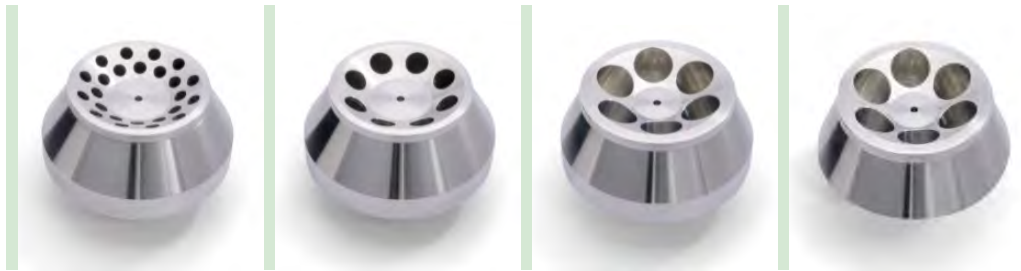
Rotor	BRK5424
Part number - Pack 24	<b>RS04 (0.2 - 0.4ml)</b>
Tube size max	6 x 30mm
Part number - Pack 24	<b>RS05 (0.5ml)</b>
Tube size max	8 x 30mm

# Haematocrit Rotor 12,000 Rpm



Part number	<b>BRK5401</b>
Rotor type	24 x Capillary & 12 x 2ml
Tube size max	2 x 75mm & 11 x 40mm
Minimum speed	500 Rpm
Maximum speed	12,000 Rpm
Maximum Rcf (G)	13500
Radius max cms	8.5cms
Sample tube angle (°)	0 & 60
Acceleration time (secs)	30
Deceleration time (secs)	30
Autoclaveable (frequency)	121°C (20)

# Rotors 10,000 Rpm



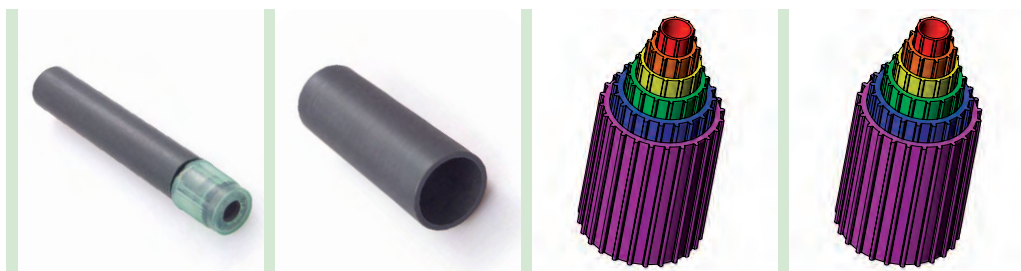
Part number	<b>BRK5224</b>	<b>BRK5208</b>	<b>BRK5210</b>	<b>BRK5256</b>
Rotor type	24 x 15ml	8 x 50ml	6 x 100ml	6 x 250ml
Tube size max	17 x 120mm	30 x 120mm	45 x 125mm	62 x 130mm
Minimum speed	500 Rpm	500 Rpm	500 Rpm	500 Rpm
Maximum speed	10,000 Rpm	10,000 Rpm	10,000 Rpm	10,000 Rpm
Maximum Rcf (G)	13400	13400	13400	15650
Radius max cms	12	12	12	14
Sample tube angle (o)	30	30	30	30
Acceleration time (secs)	40	45	45	60
Deceleration time (secs)	40	45	45	85
Autoclaveable (frequency)	121°C (30)	121°C (30)	121°C (30)	121°C (30)

## Refrigerated Centrifuges only

Minimum Temperature	4°C	4°C	4°C	4°C
---------------------	-----	-----	-----	-----

At maximum speed (relative to room temperature at 23°C )

# Reducers



Rotor	BRK5224	BRK5208	BRK5210	BRK5256
Part number	<b>RM05 (5ml)</b>	<b>RM15 (15ml)</b>	<b>RL10 (10ml)</b>	<b>RX10 (10ml)</b>
Tube size max	13 x 80mm	17 x 120mm	16 x 100mm	16 x 100mm
Part number	<b>RM10 (10ml)</b>	<b>RM25 (25ml)</b>	<b>RL25 (25ml)</b>	<b>RX25 (25ml)</b>
Tube size max	16 x 100mm	25 x 100mm	25 x 100mm	25 x 100mm
Part number			<b>RL50 (50ml)</b>	<b>RX50 (50ml)</b>
Tube size max			35 x 115mm	35 x 115mm
Part number			<b>RL85 (85ml)</b>	<b>RX85 (85ml)</b>
Tube size max			39 x 115mm	39 x 110mm
Part number				<b>RX100 (100ml)</b>
Tube size max				48 x 110mm
Part number				<b>RX175 (175ml)</b>
Tube size max				62 x 121mm

# Rotors 6000 Rpm



	<b>BRK5324</b>	<b>BRK5308</b>	<b>BRK5100</b>
Part number	<b>BRK5324</b>	<b>BRK5308</b>	<b>BRK5100</b>
Rotor type	24 x 15ml	8 x 50ml	6 x 100ml
Tube size max	17 x 120mm	30 x 120mm	45 x 125mm
Minimum speed	500 Rpm	500 Rpm	500 Rpm
Maximum speed	6,000 Rpm	6,000 Rpm	6,000 Rpm
Maximum Rcf (G)	4800	4800	4800
Radius max cms	12	12	12
Sample tube angle (°)	30	30	30
Acceleration time (secs)	35	35	35
Deceleration time (secs)	35	35	35
Autoclaveable (frequency)	121°C (20)	121°C (20)	121°C (20)

## Refrigerated Centrifuges only

Minimum Temperature	4°C	4°C	4°C
At maximum speed (relative to room temperature at 23°C )			

# Reducers



	<b>BRK5324</b>	<b>BRK5308</b>	<b>BRK5100</b>
Rotor	<b>RM05 (5ml)</b>	<b>RM15 (15ml)</b>	<b>RL10 (10ml)</b>
Part number	<b>RM05 (5ml)</b>	<b>RM15 (15ml)</b>	<b>RL10 (10ml)</b>
Tube size max	13 x 80mm	17 x 120mm	16 x 100mm
Part number	<b>RM10 (10ml)</b>	<b>RM25 (25ml)</b>	<b>RL25 (25ml)</b>
Tube size max	16 x 100mm	25 x 100mm	25 x 100mm
Part number			<b>RL50 (50ml)</b>
Tube size max			35 x 115mm
Part number			<b>RL85 (85ml)</b>
Tube size max			39 x 115mm

# Rotor Cytology

Using centrifugal force to separate and deposit a monolayer of cells onto slides whilst maintaining cellular integrity within a clearly defined area FROM ANY FLUID MATRIX. Cyto centrifugation also constructively flattens cells for excellent nuclear presentation.

Applications include Cytology, Histology, Haematology, Oncology, Immunochemistry, Virology, Serology and Microbiology.

Offering samples from 0.1ml to 6ml and an extensive range of accessories we have your Cytology needs covered.

Part Number	<b>4430</b>
Rotor type	8 x 0.2ml to 6ml
Holders	Single or double
Minimum speed	200 Rpm
Maximum speed	2,000 Rpm
Maximum Rcf (G)	550
Radius max cms	12
Sample tube angle (°)	0
Acceleration time (secs)	25
Deceleration time (secs)	25
Autoclaveable (frequency)	121°C (10)

**Cytology rotor includes Rotor, sealed lid, Clips, 24 x holders with filter card & 100 slides**

## Refrigerated Centrifuges only

Minimum Temperature	0°C
At maximum speed (relative to room temperature at 23°C )	



## Accessories



**4446**

Double sample holder with card (up to 1ml)



**4444**

Single sample holder with card (up to 1ml)



**4600**

Single sample holder with card (up to 6ml)



**4462**

Stainless steel clips